

Appendix 1

Exhibition information sheet

The exhibition space of the Academy of Fine Arts Vienna operates at the interface between artistic-scientific research and university art practices on the one hand and the international art scene on the other. It opens up the contemporary knowledge and art production of the Academy to a broad public but also has a stimulating effect on the Academy by presenting international curatorial and artistic positions.

The space extends across two floors (ground floor/basement) of the corner building Eschenbachgasse/Getreidemarkt with a total exhibition area of approx. 280 m².

Detailed information on the space can be downloaded at

<https://www.akbild.ac.at/resolveuid/79a9ae1226057ca5b020f3b6a9e0f7>.

General conditions for the realization of projects

The Office for Public Relations and Exhibition Management of the Academy of Fine Arts Vienna will be available for consultation, help plan and organize the exhibition, and offer PR support. It will primarily

- provide conceptual support in the realization of the exhibition,
- manage the entire project budget,
- handle loan transactions and the operation of the exhibition, guarantee adequate conservatory conditions, etc.,
- plan exhibition contrivances and displays, install and dismount the exhibition together with the Department Building | Technical Resources | Acquisitions in accordance with the given structural and safety conditions,
- provide the necessary media technology (projectors, monitors, DVD or media players) within its possibilities,
- produce printed matter (invitation, folder) along the lines of the Academy's CI,
- do press work and support the press conference,
- assist with the project's presentation on the Academy's homepage, electronic mailings, and advertisements in accordance with the available budget.

All services can only be provided within the limits of the schedule specified by the Office for Public Relations and Exhibition Management.

Curators commit themselves to at least three mediation events (e.g. curator tours or workshops) during the exhibition. An earmarked budget of 1,500 euros (gross = net) is available for this purpose.

Budget breakdown

- Basic budget: fixed components of the exhibition production (exhibition texts, insurance, opening drinks, waste disposal, etc.), operation of the exhibition (supervision, etc.), public relations work including printed matter. The budget provided for this purpose is earmarked for a specific purpose and cannot be reallocated.

- Operating budget (max. 10,000 euros, plus max. 1,500 euros for supporting program; net = gross): production of new works, material, transport, displays, equipment rentals, fees, supporting program (in accordance with the budget applied for and negotiated).

For questions regarding the call, the space, or the exhibition program, please contact

Stephanie Damianitsch
+43 (0)664 80887-1304
s.damianitsch@akbild.ac.at

Appendix 2

Course information sheet

The course, which can be offered in the context of the exhibition project, is not limited to students participating in the exhibition but will be accessible to all students of the Academy. Accordingly, the conception of the course should take care to ensure that the exhibition-related questions are as broadly based as possible. Although these questions should take the concrete exhibition project as their starting point, they should also impart general competence in exhibition theory and practical issues beyond the conveyed theoretical content and practical experience.

Basic information on the course

- The “Curatorial Studies” course is a seminar of two semester hours per week.
- According to the curriculum for the Diploma in Fine Arts, the seminar is an elective course part of the second period of study of the Art and Cultural Studies program (ref. no. 607). It can be credited as a specializing or free elective subject for students of the first period of study (ref. no. 605) as well as for students of the Fine Arts study program (ref. no. 606).
- The course is intended to be offered in the summer semester 2021 or the winter semester 2021/22 to accompany the preparations for the exhibition or the current exhibition.
- Seminars are intended to deepen the artistic-scientific discussion. In seminars, students must make their own substantial contributions in written (seminar paper) and/or oral form (presentations).
- Remuneration is based on the collective agreement for instructors and monthly minimum 338,60 euros.
- Holding the course on a weekly basis is preferred; it is possible to block part of the course but not the entire course.

Application requirements

The course concept in German or English (max. 2 pages) should be part of the overall submission and provide the following details according to the scheme below:

- title (title of the course in German and English),
- content of the course and its relation to the concept of the planned exhibition,
- expected previous knowledge of the participants,
- objectives (expected outcome and acquired skills),
- teaching and learning methods and mode of examination,
- recommended literature on the subject,
- proof of university teaching experience (if available).

A prerequisite for the holding of the seminar is a completed course of study (Master/Mag./Mag.^a) offered at the Academy of Fine Arts Vienna or of related subjects at another university, or proof of several years of subject-specific professional practice.

There is the possibility of team teaching (the cooperation of two teachers such as an external instructor and an internal teacher, for example). Please note that in the case of team teaching, the assignment will be for only half of the number of hours.

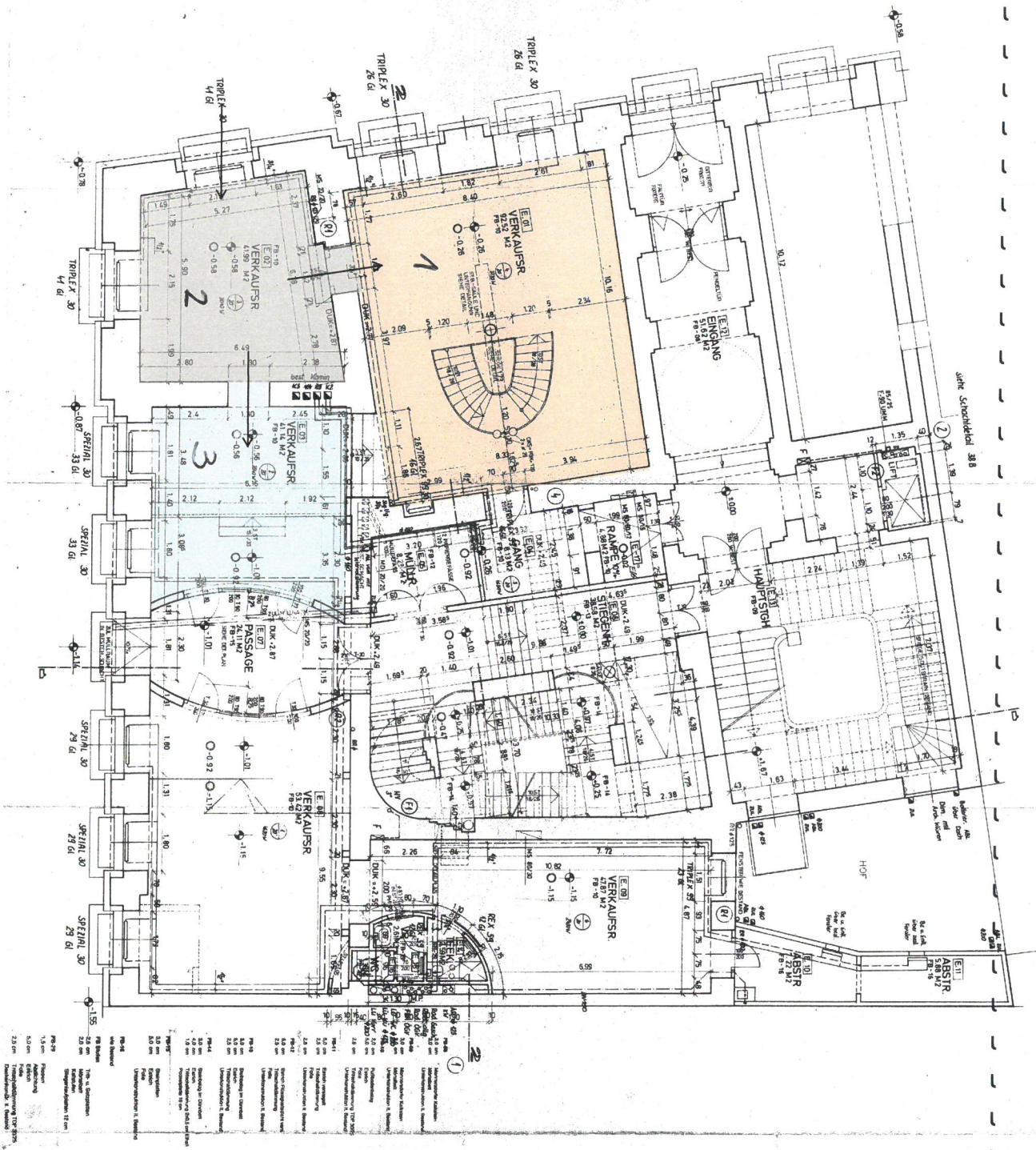
Students submitting a concept in response to the call have the possibility to nominate an internal or external head of the seminar and contribute to the course.

In case of questions, please contact

Stephanie Damianitsch

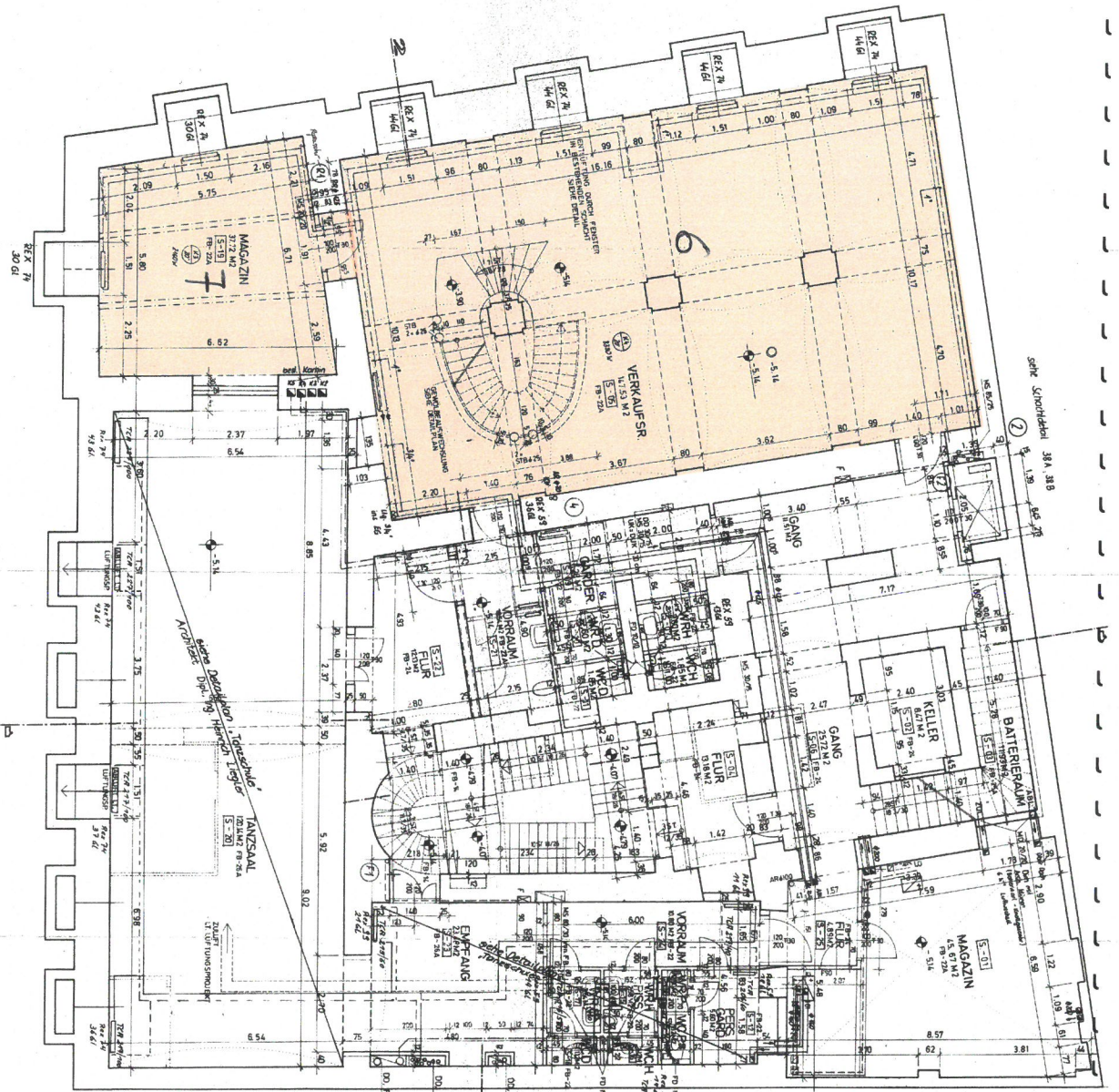
+43 (0)664 80887-1304

s.damianitsch@akbild.ac.at



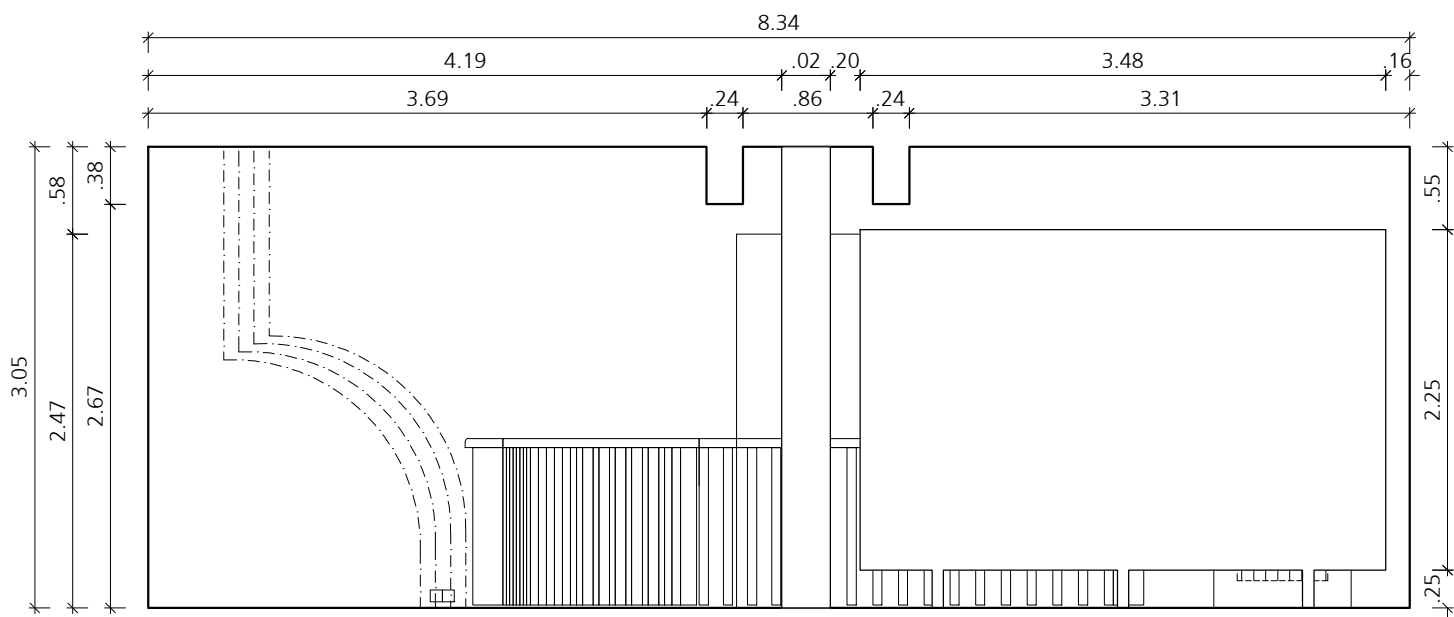
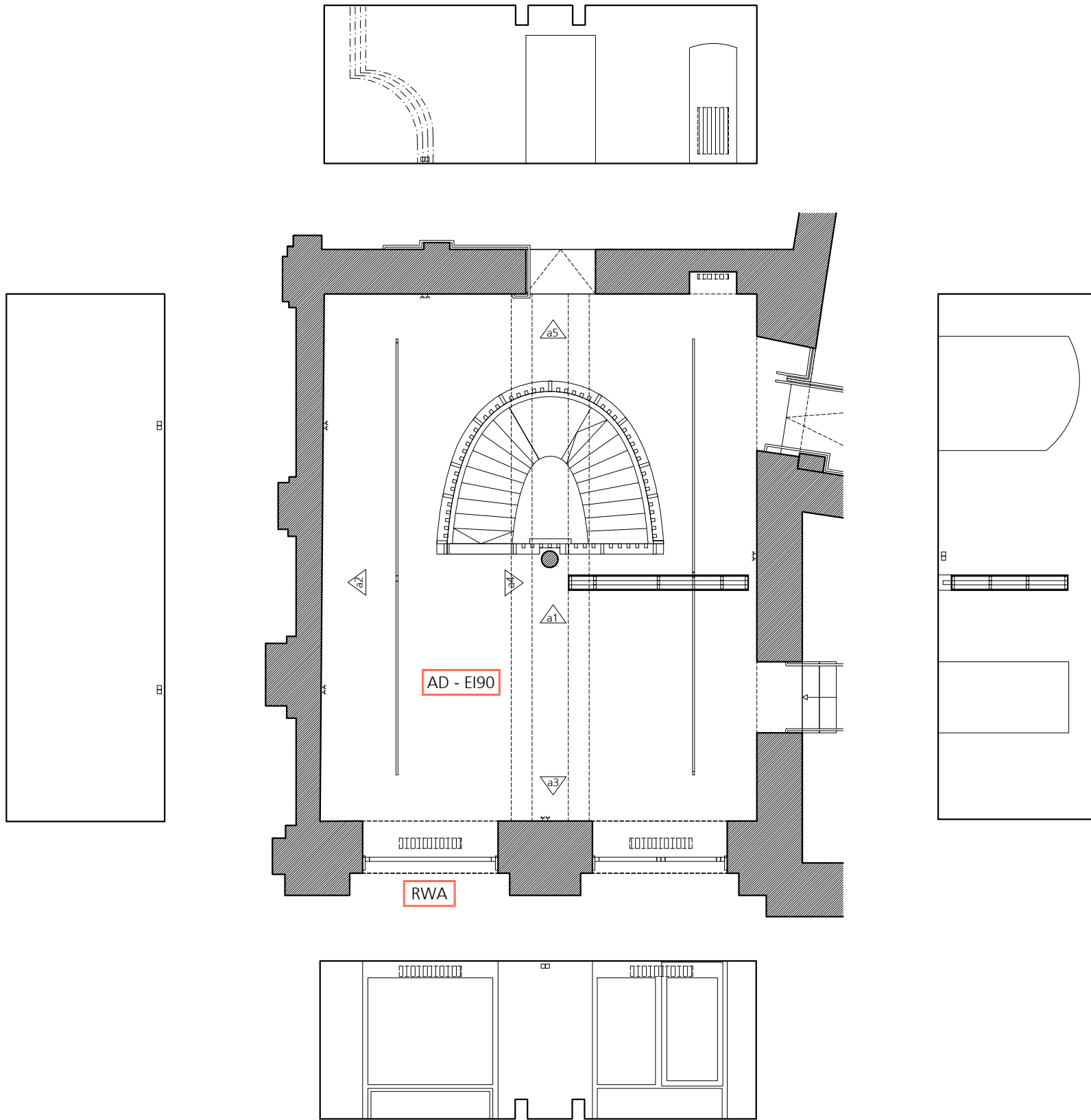
xhibit und xposit 2019
 Eschabacgasse 11/Ecke
 Getreidemarkt,
 1010 Wien
Erdgeschoss
 ca. 41 m² Eingangsbereich und Info
 ca. 92 m² xhibit
 ca. 41 m² xposit
 Raumhöhe: ca. 3,20 m

Code	Material / Element	Maß / Dimension	Einheit	Vermerk
R101	Wandputz	12,00	m ²	
R102	Wandputz	12,00	m ²	
R103	Wandputz	12,00	m ²	
R104	Wandputz	12,00	m ²	
R105	Wandputz	12,00	m ²	
R106	Wandputz	12,00	m ²	
R107	Wandputz	12,00	m ²	
R108	Wandputz	12,00	m ²	
R109	Wandputz	12,00	m ²	
R110	Wandputz	12,00	m ²	
R111	Wandputz	12,00	m ²	
R112	Wandputz	12,00	m ²	
R113	Wandputz	12,00	m ²	
R114	Wandputz	12,00	m ²	
R115	Wandputz	12,00	m ²	
R116	Wandputz	12,00	m ²	
R117	Wandputz	12,00	m ²	
R118	Wandputz	12,00	m ²	
R119	Wandputz	12,00	m ²	
R120	Wandputz	12,00	m ²	
R121	Wandputz	12,00	m ²	
R122	Wandputz	12,00	m ²	
R123	Wandputz	12,00	m ²	
R124	Wandputz	12,00	m ²	
R125	Wandputz	12,00	m ²	
R126	Wandputz	12,00	m ²	
R127	Wandputz	12,00	m ²	
R128	Wandputz	12,00	m ²	
R129	Wandputz	12,00	m ²	
R130	Wandputz	12,00	m ²	
R131	Wandputz	12,00	m ²	
R132	Wandputz	12,00	m ²	
R133	Wandputz	12,00	m ²	
R134	Wandputz	12,00	m ²	
R135	Wandputz	12,00	m ²	
R136	Wandputz	12,00	m ²	
R137	Wandputz	12,00	m ²	
R138	Wandputz	12,00	m ²	
R139	Wandputz	12,00	m ²	
R140	Wandputz	12,00	m ²	
R141	Wandputz	12,00	m ²	
R142	Wandputz	12,00	m ²	
R143	Wandputz	12,00	m ²	
R144	Wandputz	12,00	m ²	
R145	Wandputz	12,00	m ²	
R146	Wandputz	12,00	m ²	
R147	Wandputz	12,00	m ²	
R148	Wandputz	12,00	m ²	
R149	Wandputz	12,00	m ²	
R150	Wandputz	12,00	m ²	
R151	Wandputz	12,00	m ²	
R152	Wandputz	12,00	m ²	
R153	Wandputz	12,00	m ²	
R154	Wandputz	12,00	m ²	
R155	Wandputz	12,00	m ²	
R156	Wandputz	12,00	m ²	
R157	Wandputz	12,00	m ²	
R158	Wandputz	12,00	m ²	
R159	Wandputz	12,00	m ²	
R160	Wandputz	12,00	m ²	
R161	Wandputz	12,00	m ²	
R162	Wandputz	12,00	m ²	
R163	Wandputz	12,00	m ²	
R164	Wandputz	12,00	m ²	
R165	Wandputz	12,00	m ²	
R166	Wandputz	12,00	m ²	
R167	Wandputz	12,00	m ²	
R168	Wandputz	12,00	m ²	
R169	Wandputz	12,00	m ²	
R170	Wandputz	12,00	m ²	
R171	Wandputz	12,00	m ²	
R172	Wandputz	12,00	m ²	
R173	Wandputz	12,00	m ²	
R174	Wandputz	12,00	m ²	
R175	Wandputz	12,00	m ²	
R176	Wandputz	12,00	m ²	
R177	Wandputz	12,00	m ²	
R178	Wandputz	12,00	m ²	
R179	Wandputz	12,00	m ²	
R180	Wandputz	12,00	m ²	
R181	Wandputz	12,00	m ²	
R182	Wandputz	12,00	m ²	
R183	Wandputz	12,00	m ²	
R184	Wandputz	12,00	m ²	
R185	Wandputz	12,00	m ²	
R186	Wandputz	12,00	m ²	
R187	Wandputz	12,00	m ²	
R188	Wandputz	12,00	m ²	
R189	Wandputz	12,00	m ²	
R190	Wandputz	12,00	m ²	
R191	Wandputz	12,00	m ²	
R192	Wandputz	12,00	m ²	
R193	Wandputz	12,00	m ²	
R194	Wandputz	12,00	m ²	
R195	Wandputz	12,00	m ²	
R196	Wandputz	12,00	m ²	
R197	Wandputz	12,00	m ²	
R198	Wandputz	12,00	m ²	
R199	Wandputz	12,00	m ²	
R200	Wandputz	12,00	m ²	



RS 11	Deckung im Oberbau	100 mm
RS 12	Deckung im Oberbau	100 mm
RS 13	Deckung im Oberbau	100 mm
RS 14	Deckung im Oberbau	100 mm
RS 15	Deckung im Oberbau	100 mm
RS 16	Deckung im Oberbau	100 mm
RS 17	Deckung im Oberbau	100 mm
RS 18	Deckung im Oberbau	100 mm
RS 19	Deckung im Oberbau	100 mm
RS 20	Deckung im Oberbau	100 mm
RS 21	Deckung im Oberbau	100 mm
RS 22	Deckung im Oberbau	100 mm
RS 23	Deckung im Oberbau	100 mm
RS 24	Deckung im Oberbau	100 mm
RS 25	Deckung im Oberbau	100 mm
RS 26	Deckung im Oberbau	100 mm
RS 27	Deckung im Oberbau	100 mm
RS 28	Deckung im Oberbau	100 mm
RS 29	Deckung im Oberbau	100 mm
RS 30	Deckung im Oberbau	100 mm
RS 31	Deckung im Oberbau	100 mm
RS 32	Deckung im Oberbau	100 mm
RS 33	Deckung im Oberbau	100 mm
RS 34	Deckung im Oberbau	100 mm
RS 35	Deckung im Oberbau	100 mm
RS 36	Deckung im Oberbau	100 mm
RS 37	Deckung im Oberbau	100 mm
RS 38	Deckung im Oberbau	100 mm
RS 39	Deckung im Oberbau	100 mm
RS 40	Deckung im Oberbau	100 mm
RS 41	Deckung im Oberbau	100 mm
RS 42	Deckung im Oberbau	100 mm
RS 43	Deckung im Oberbau	100 mm
RS 44	Deckung im Oberbau	100 mm
RS 45	Deckung im Oberbau	100 mm
RS 46	Deckung im Oberbau	100 mm
RS 47	Deckung im Oberbau	100 mm
RS 48	Deckung im Oberbau	100 mm
RS 49	Deckung im Oberbau	100 mm
RS 50	Deckung im Oberbau	100 mm
RS 51	Deckung im Oberbau	100 mm
RS 52	Deckung im Oberbau	100 mm
RS 53	Deckung im Oberbau	100 mm
RS 54	Deckung im Oberbau	100 mm
RS 55	Deckung im Oberbau	100 mm
RS 56	Deckung im Oberbau	100 mm
RS 57	Deckung im Oberbau	100 mm
RS 58	Deckung im Oberbau	100 mm
RS 59	Deckung im Oberbau	100 mm
RS 60	Deckung im Oberbau	100 mm
RS 61	Deckung im Oberbau	100 mm
RS 62	Deckung im Oberbau	100 mm
RS 63	Deckung im Oberbau	100 mm
RS 64	Deckung im Oberbau	100 mm
RS 65	Deckung im Oberbau	100 mm
RS 66	Deckung im Oberbau	100 mm
RS 67	Deckung im Oberbau	100 mm
RS 68	Deckung im Oberbau	100 mm
RS 69	Deckung im Oberbau	100 mm
RS 70	Deckung im Oberbau	100 mm
RS 71	Deckung im Oberbau	100 mm
RS 72	Deckung im Oberbau	100 mm
RS 73	Deckung im Oberbau	100 mm
RS 74	Deckung im Oberbau	100 mm
RS 75	Deckung im Oberbau	100 mm
RS 76	Deckung im Oberbau	100 mm
RS 77	Deckung im Oberbau	100 mm
RS 78	Deckung im Oberbau	100 mm
RS 79	Deckung im Oberbau	100 mm
RS 80	Deckung im Oberbau	100 mm
RS 81	Deckung im Oberbau	100 mm
RS 82	Deckung im Oberbau	100 mm
RS 83	Deckung im Oberbau	100 mm
RS 84	Deckung im Oberbau	100 mm
RS 85	Deckung im Oberbau	100 mm
RS 86	Deckung im Oberbau	100 mm
RS 87	Deckung im Oberbau	100 mm
RS 88	Deckung im Oberbau	100 mm
RS 89	Deckung im Oberbau	100 mm
RS 90	Deckung im Oberbau	100 mm
RS 91	Deckung im Oberbau	100 mm
RS 92	Deckung im Oberbau	100 mm
RS 93	Deckung im Oberbau	100 mm
RS 94	Deckung im Oberbau	100 mm
RS 95	Deckung im Oberbau	100 mm
RS 96	Deckung im Oberbau	100 mm
RS 97	Deckung im Oberbau	100 mm
RS 98	Deckung im Oberbau	100 mm
RS 99	Deckung im Oberbau	100 mm
RS 100	Deckung im Oberbau	100 mm

xhibit und xposit 2019
 Eschenbachgasse 11/ Ecke
 Getreidemarkt,
 1010 Wien
Souterrain
 ca. 147 m² und 37 m²: xhibit
 Raumhöhe: ca. 4,50 m
 (Gewölbedecke, 3 Pfeiler)



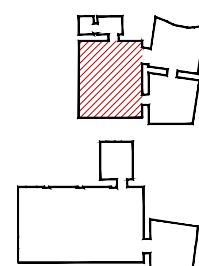
raum 1
 abgehängte decke - brandschutz EI90 -
 keine befestigungen möglich

ansicht 1

AD - EI90 Abgehängte Decke - Brandschutz EI90

RWA Rauch- und Wärmeabzug

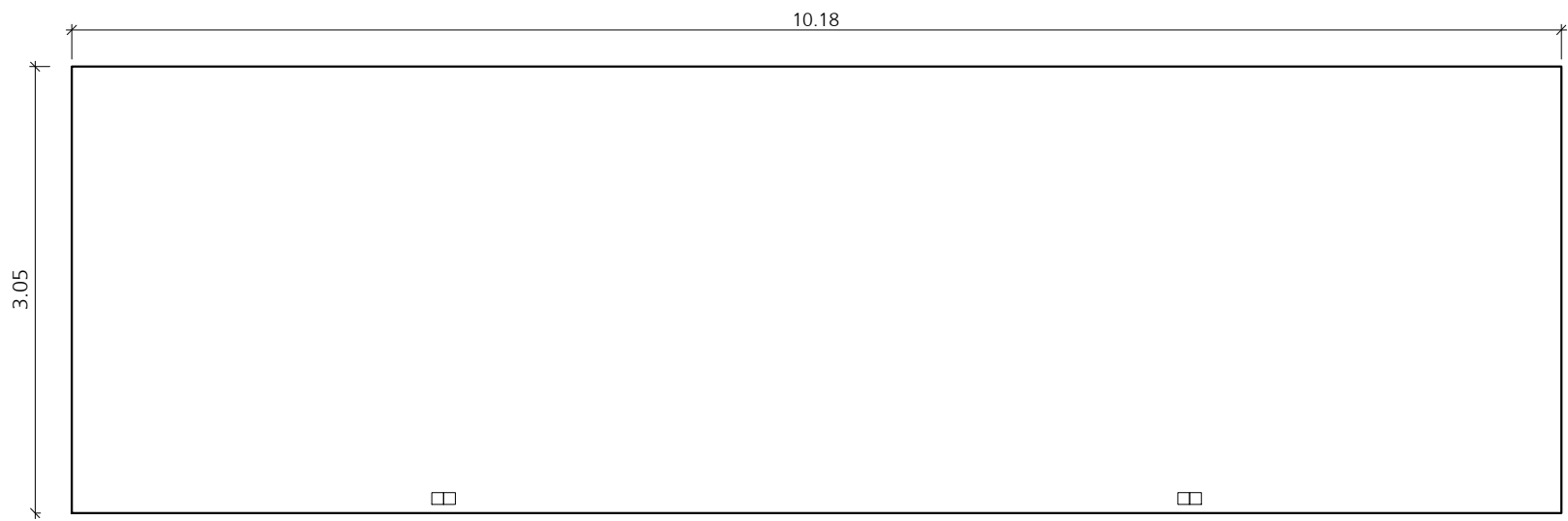
Naturmasze nehmen!
 Planmasze prüfen!



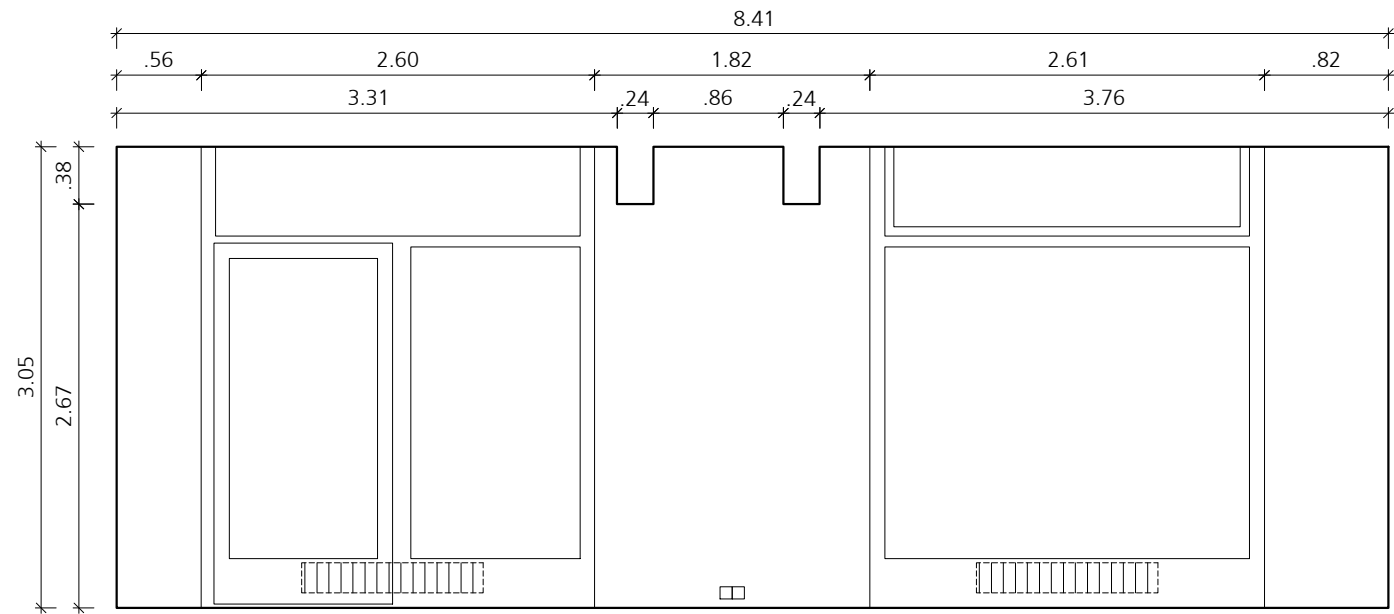
ulrich huhs
 architekten

1060 wien, morizgasse 1/20
 +43 1 581 83 43
 office@ulrichhuhs.eu
 www.ulrichhuhs.eu

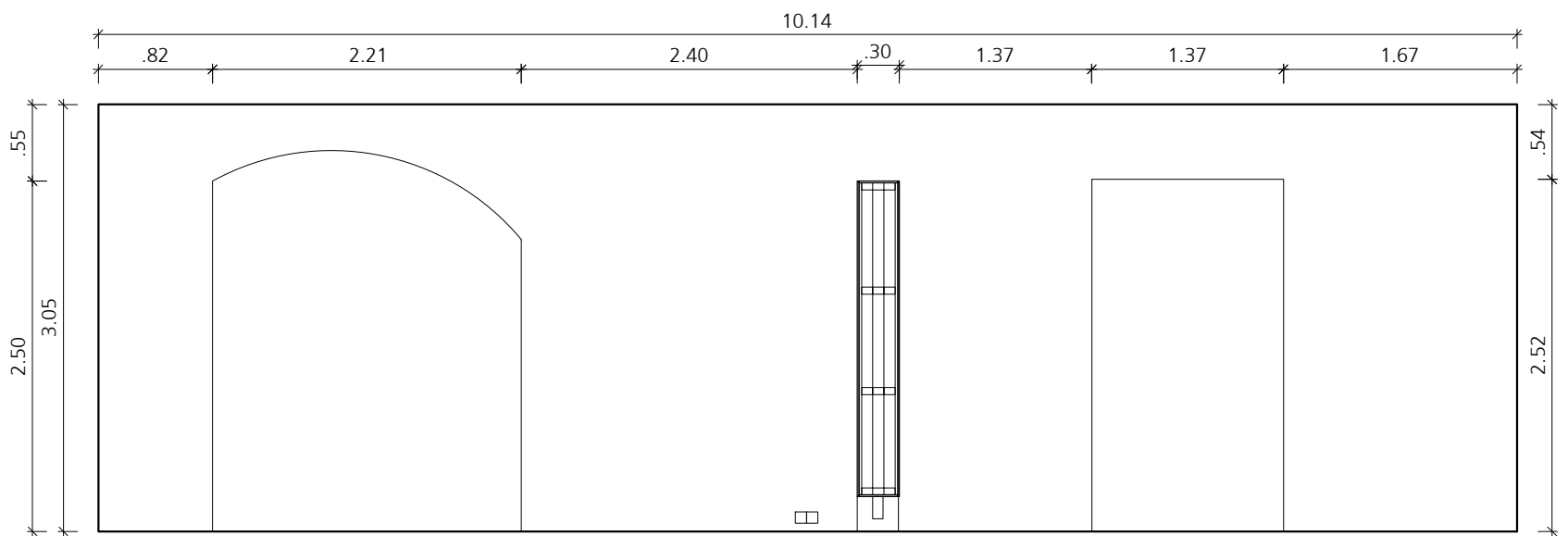
Projekt 078 xak		Raum 1 - Übersicht				pol VORABZUG	
Projektnummer 078	Format A3	Masstab 1:100/1:50	Freigabevermerk Bauherr	Freigabevermerk Architekt	Datum 29.10.2018	Revision 30.10.2018	Plannummer 078_xak_kur_1_1_a



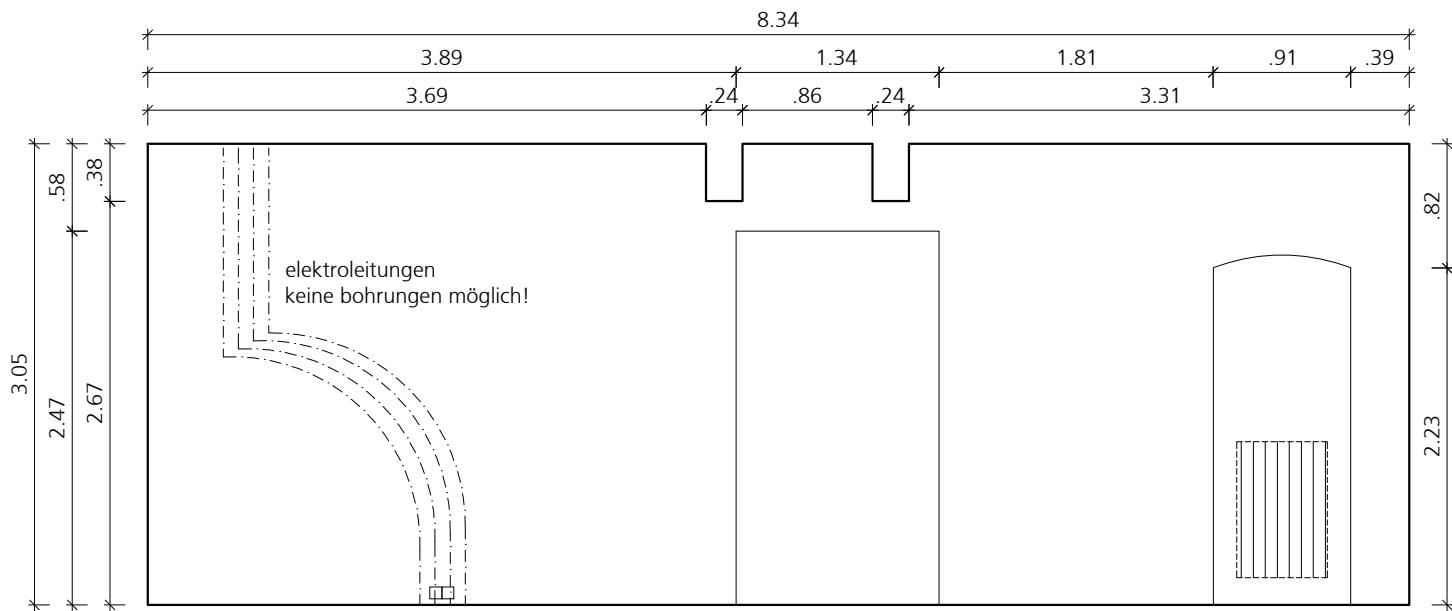
ansicht 2



ansicht 3



ansicht 4



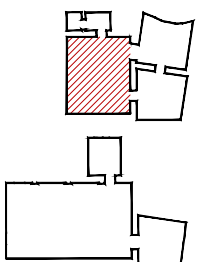
ansicht 5

raum 1
abgehängte decke - brandschutz EI90 -
keine befestigungen möglich

AD - EI90 Abgehängte Decke - Brandschutz EI90

RWA Rauch- und Wärmeabzug

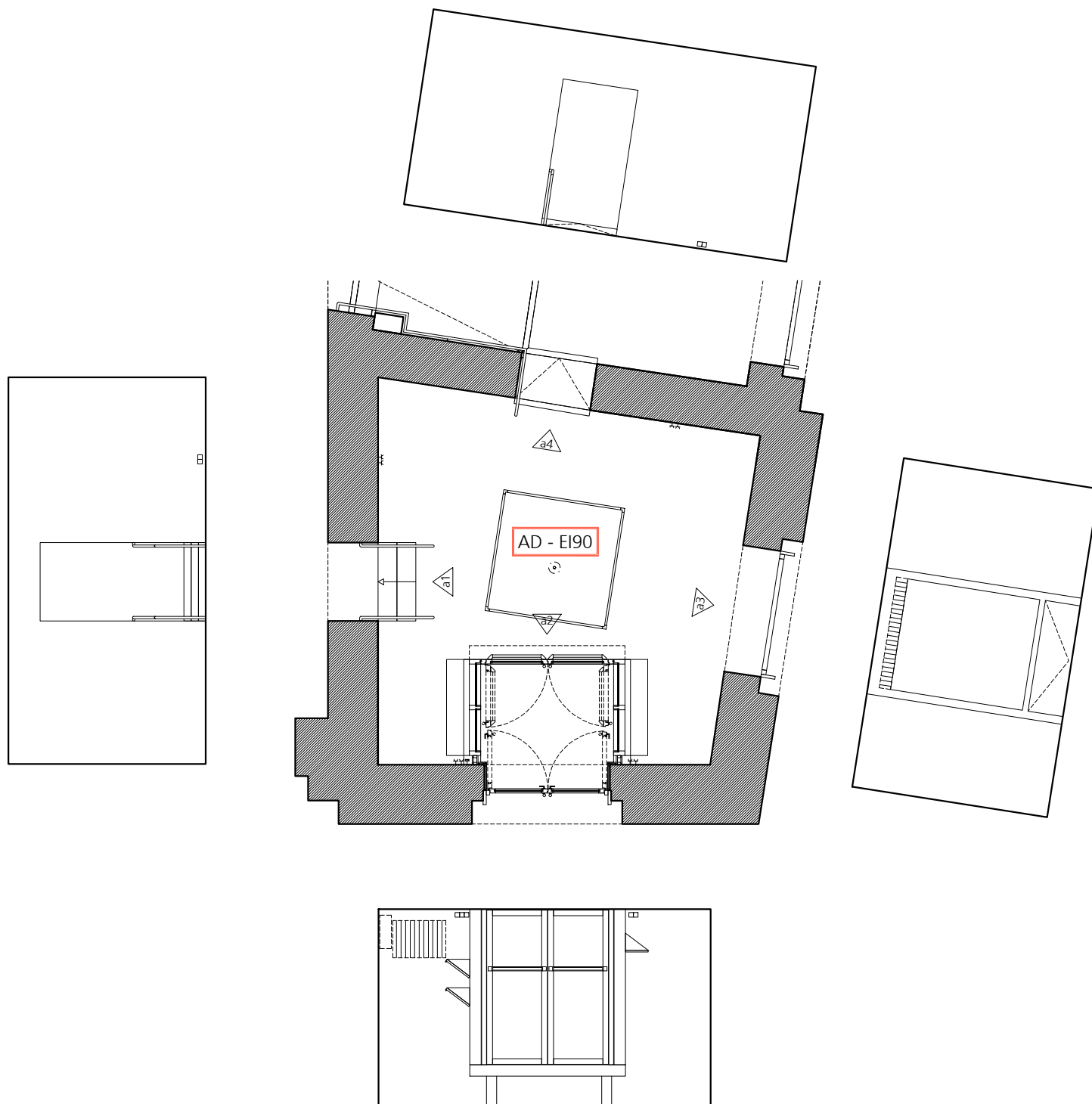
Naturmasze nehmen!
Planmasze prüfen!



ulrich huhs
architekten

1060 wien, morizgasse 1/20
+43 1 581 83 43
office@ulrichhuhs.eu
www.ulrichhuhs.eu

Projekt 078 xak			Raum 1 - Wandansichten				pol	VORABZUG
Projektnummer 078	Format A3	Massstab 1:50	Freigabevermerk Bauherr	Freigabevermerk Architekt	Datum 29.10.2018	Revision 30.10.2018	Plannummer 078_xak_kur_1_2_a	

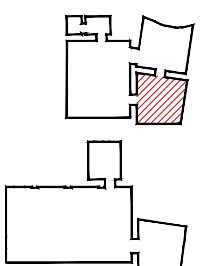


raum 2
 abgehängte decke - brandschutz EI90 -
 keine befestigungen möglich

AD - EI90 Abgehängte Decke - Brandschutz EI90

RWA Rauch- und Wärmeabzug

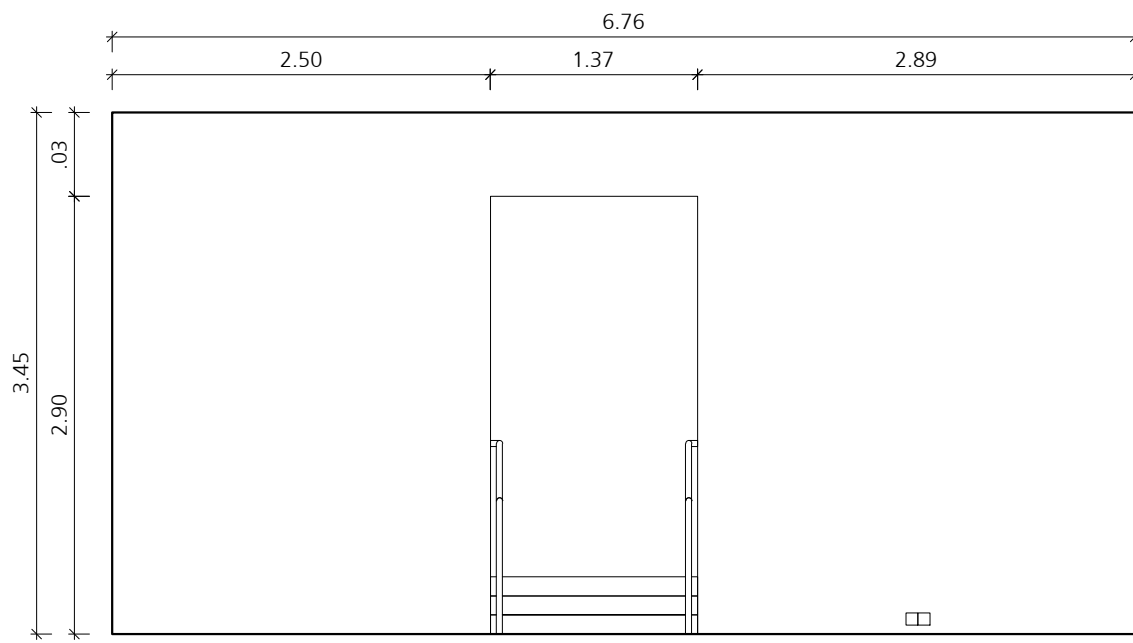
Naturmasze nehmen!
 Planmasze prüfen!



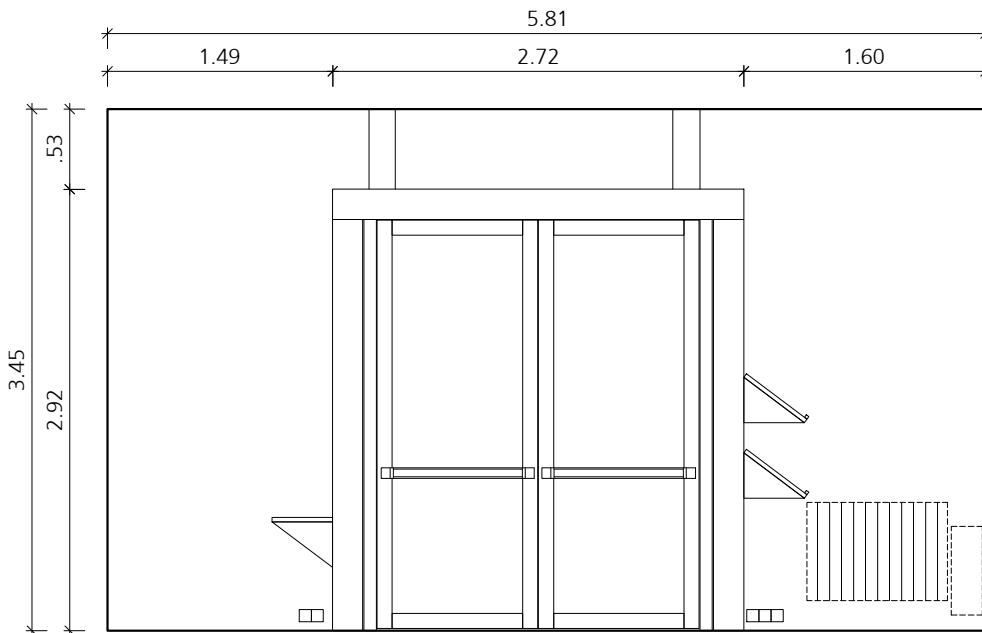
ulrich huhs
 architekten

1060 wien, morizgasse 1/20
 +43 1 581 83 43
 office@ulrichhuhs.eu
 www.ulrichhuhs.eu

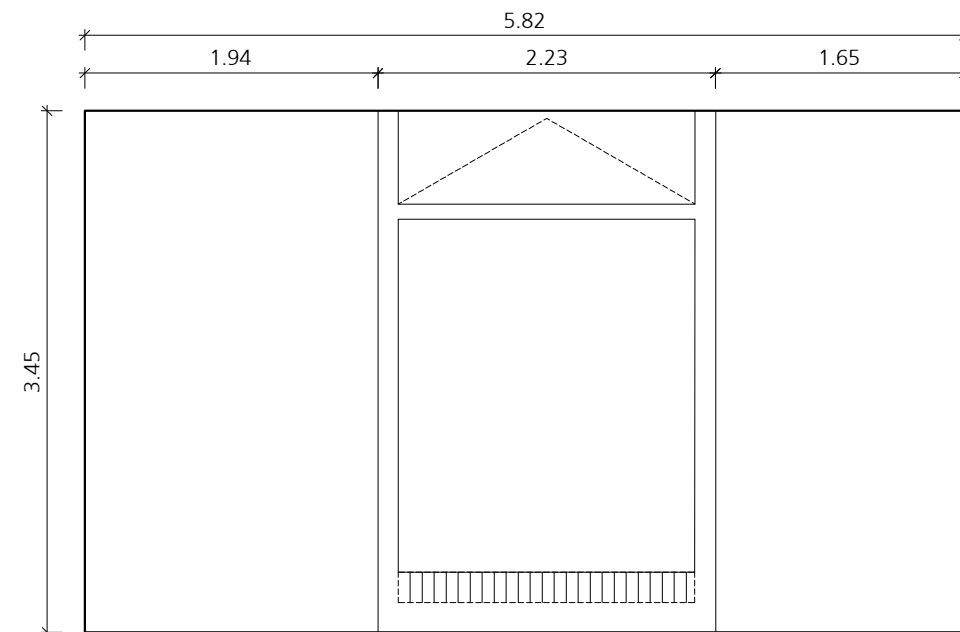
Projekt 078 xak			Raum 2 - Übersicht				pol VORABZUG	
Projektnummer 078	Format A3	Masstab 1:100	Freigabevermerk Bauherr	Freigabevermerk Architekt	Datum 29.10.2018	Revision 30.10.2018	Plannummer 078_xak_kur_2_1	



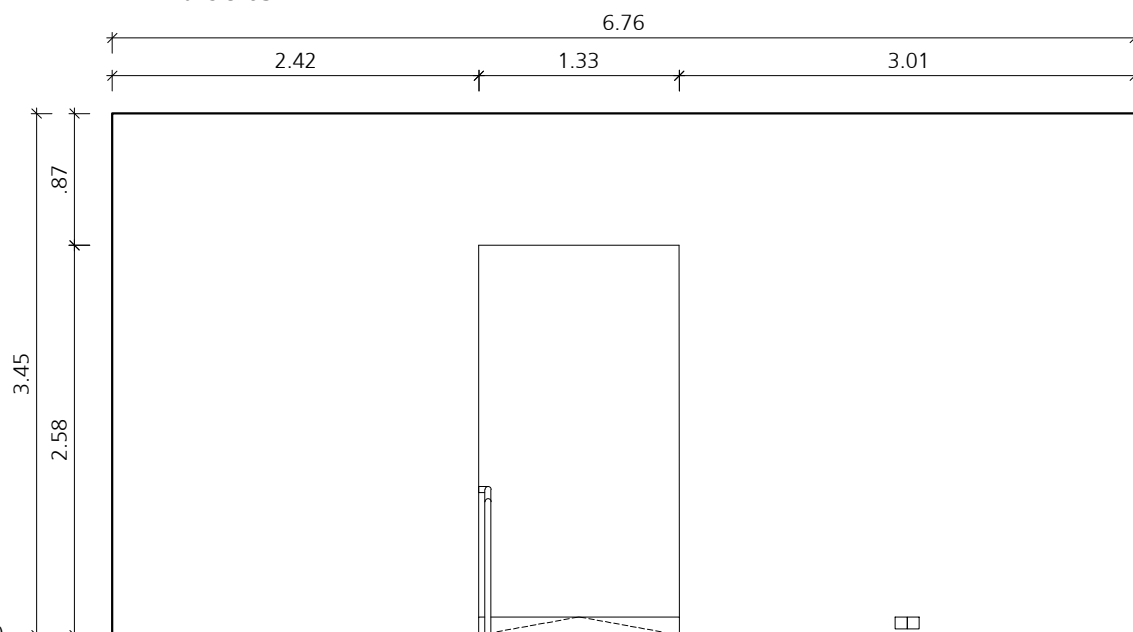
ansicht 1



ansicht 2



ansicht 3



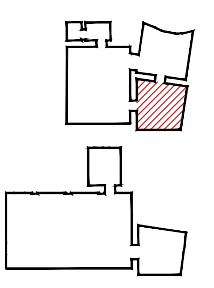
ansicht 4

raum 2
abgehängte decke - brandschutz EI90 -
keine befestigungen möglich

AD - EI90 Abgehängte Decke - Brandschutz EI90

RWA Rauch- und Wärmeabzug

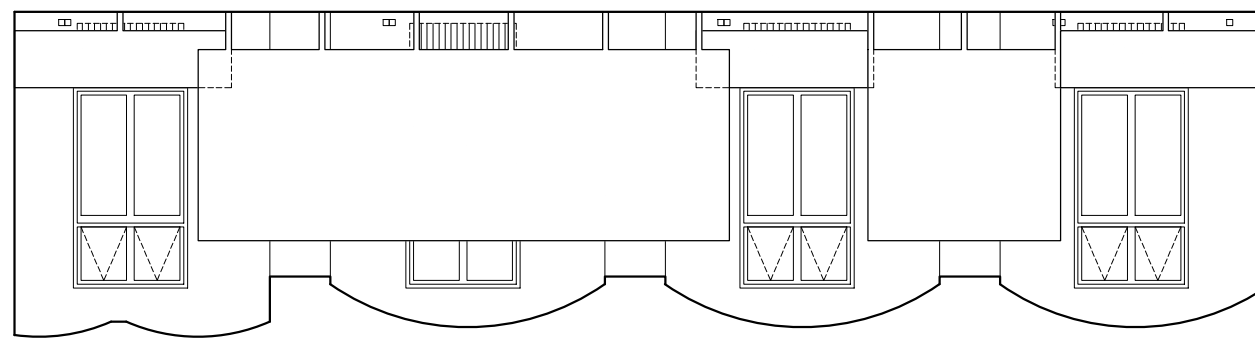
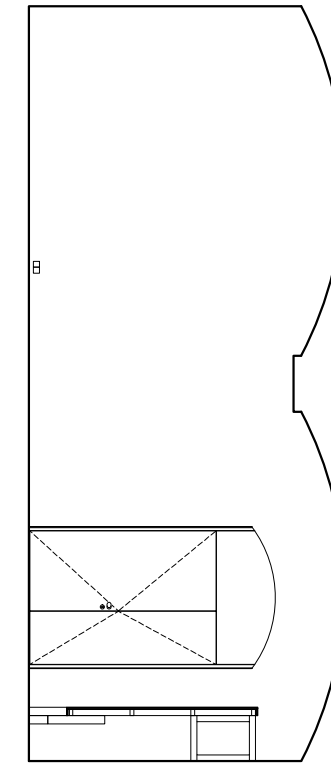
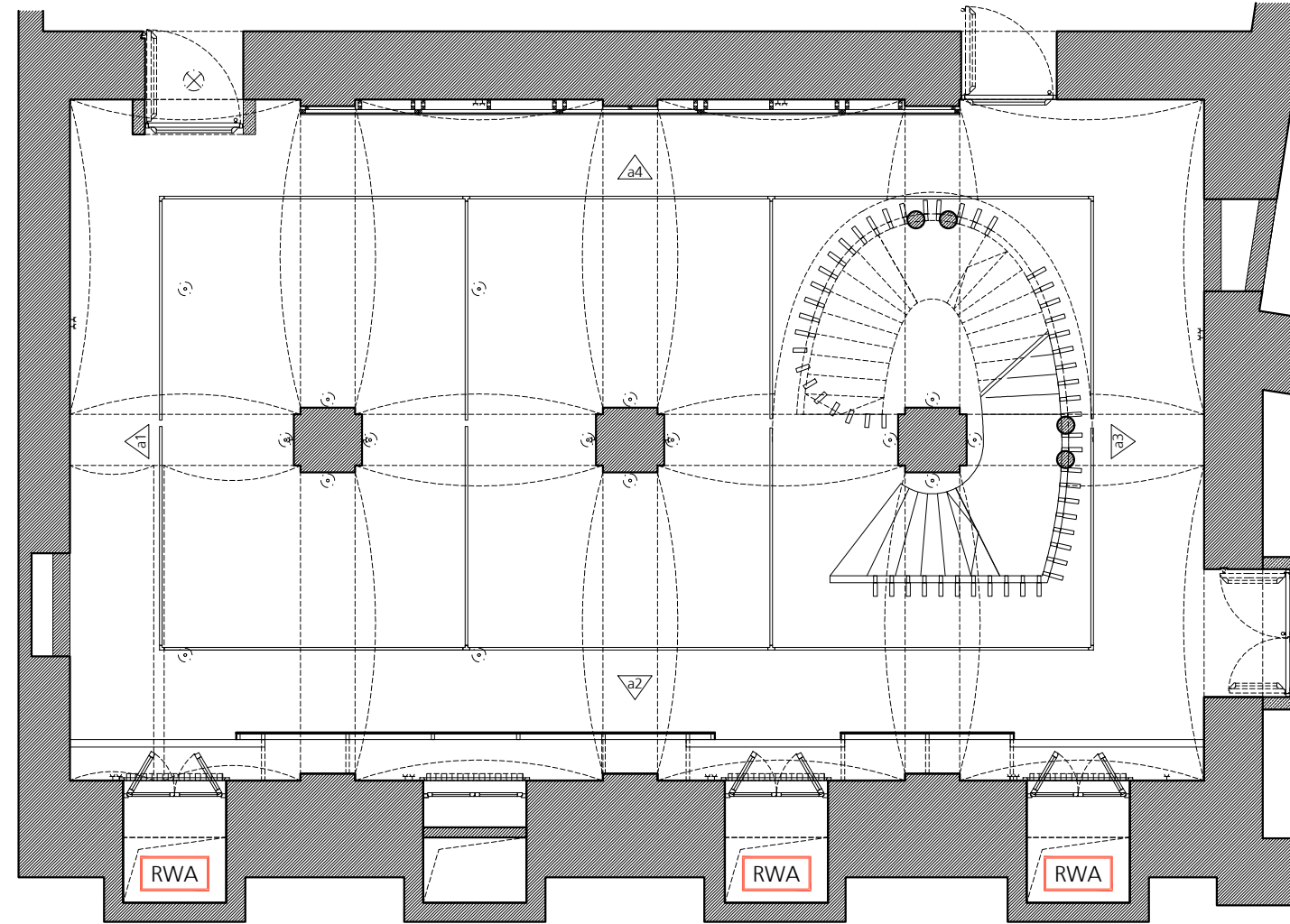
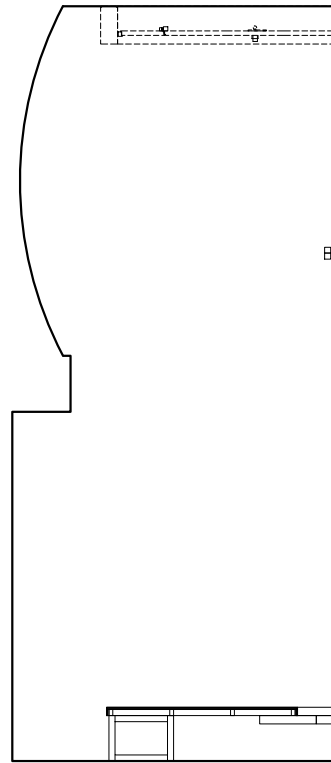
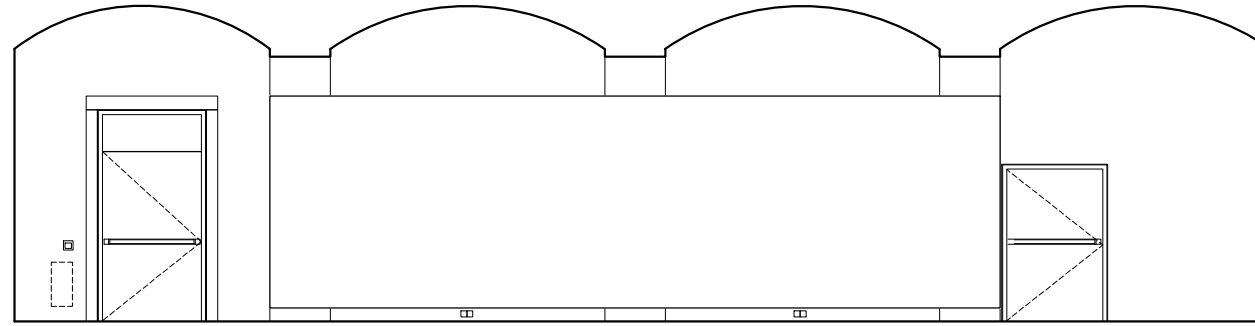
Naturmasze nehmen!
Planmasze prüfen!



ulrich huhs
architekten

1060 wien, morizgasse 1/20
+43 1 581 83 43
office@ulrichhuhs.eu
www.ulrichhuhs.eu

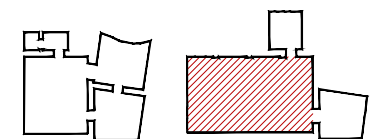
Projekt 078 xak			Raum 2 - Wandansichten				pol VORABZUG	
Projektnummer 078	Format A3	Masstab 1:50	Freigabevermerk Bauherr	Freigabevermerk Architekt	Datum 29.10.2018	Revision 30.10.2018	Plannummer 078_xak_kur_2_2	



raum 6
historische ziegeldecke -
keine befestigungen möglich

RWA Rauch- und Wärmeabzug

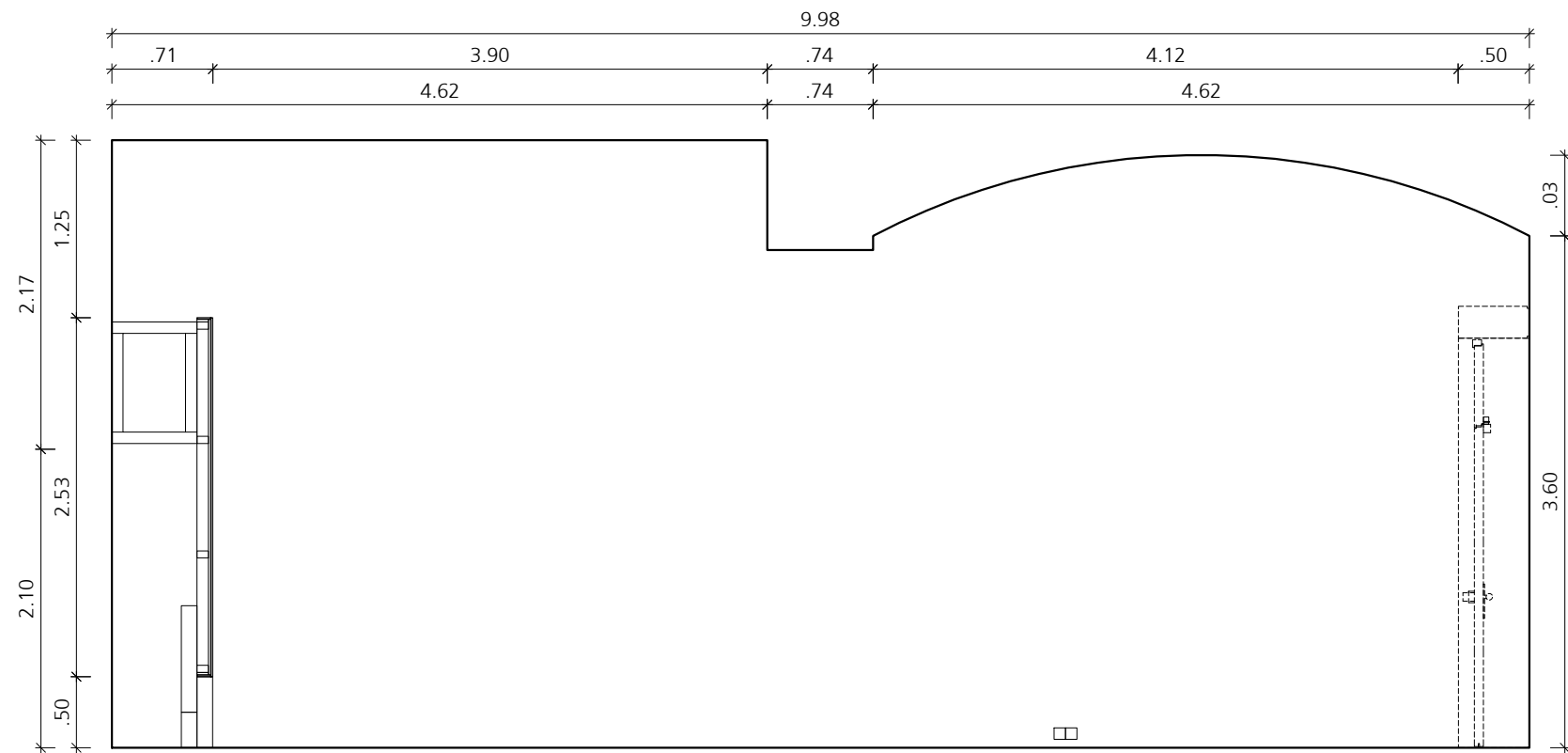
Naturmasze nehmen!
Planmasze prüfen!



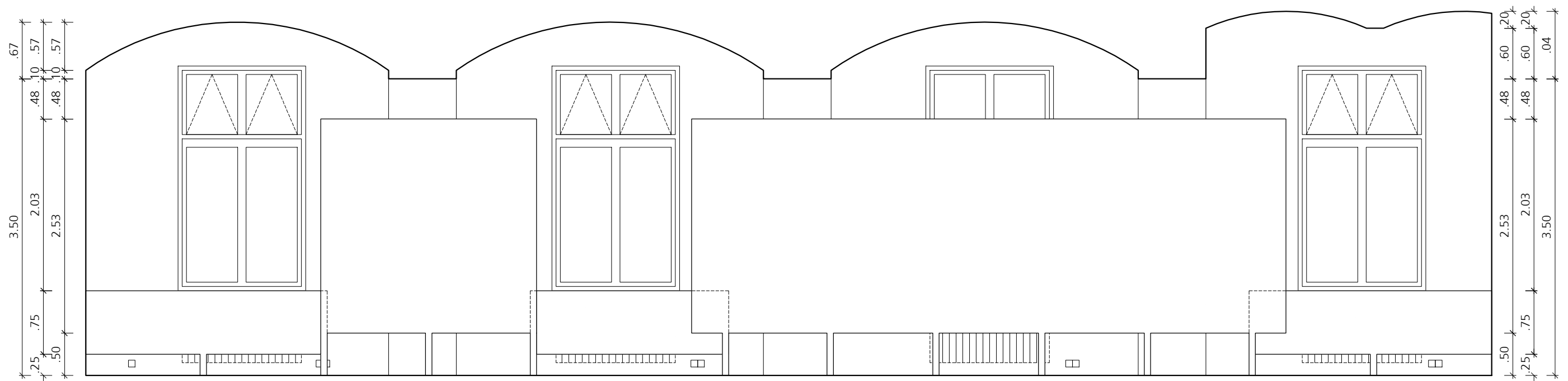
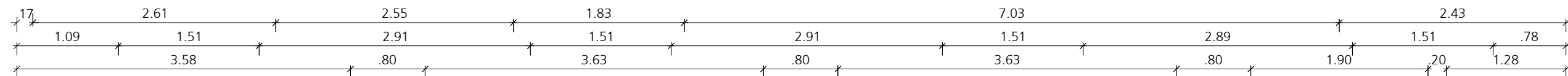
ulrich huhs
architekten

1060 wien, morizgasse 1/20
+43 1 581 83 43
office@ulrichhuhs.eu
www.ulrichhuhs.eu

Projekt 078 xak			Raum 6 - Übersicht				pol VORABZUG	
Projektnummer 078	Format A3	Massstab 1.100	Freigabevermerk Bauherr	Freigabevermerk Architekt	Datum 29.10.2018	Revision 31.10.2018	Plannummer 078_xak_kur_4_1_b	



ansicht 1



ansicht 2

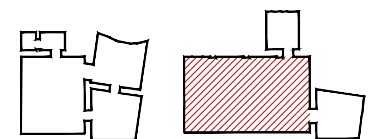


raum 6

historische ziegeldecke -
keine befestigungen möglich

RWA Rauch- und Wärmeabzug

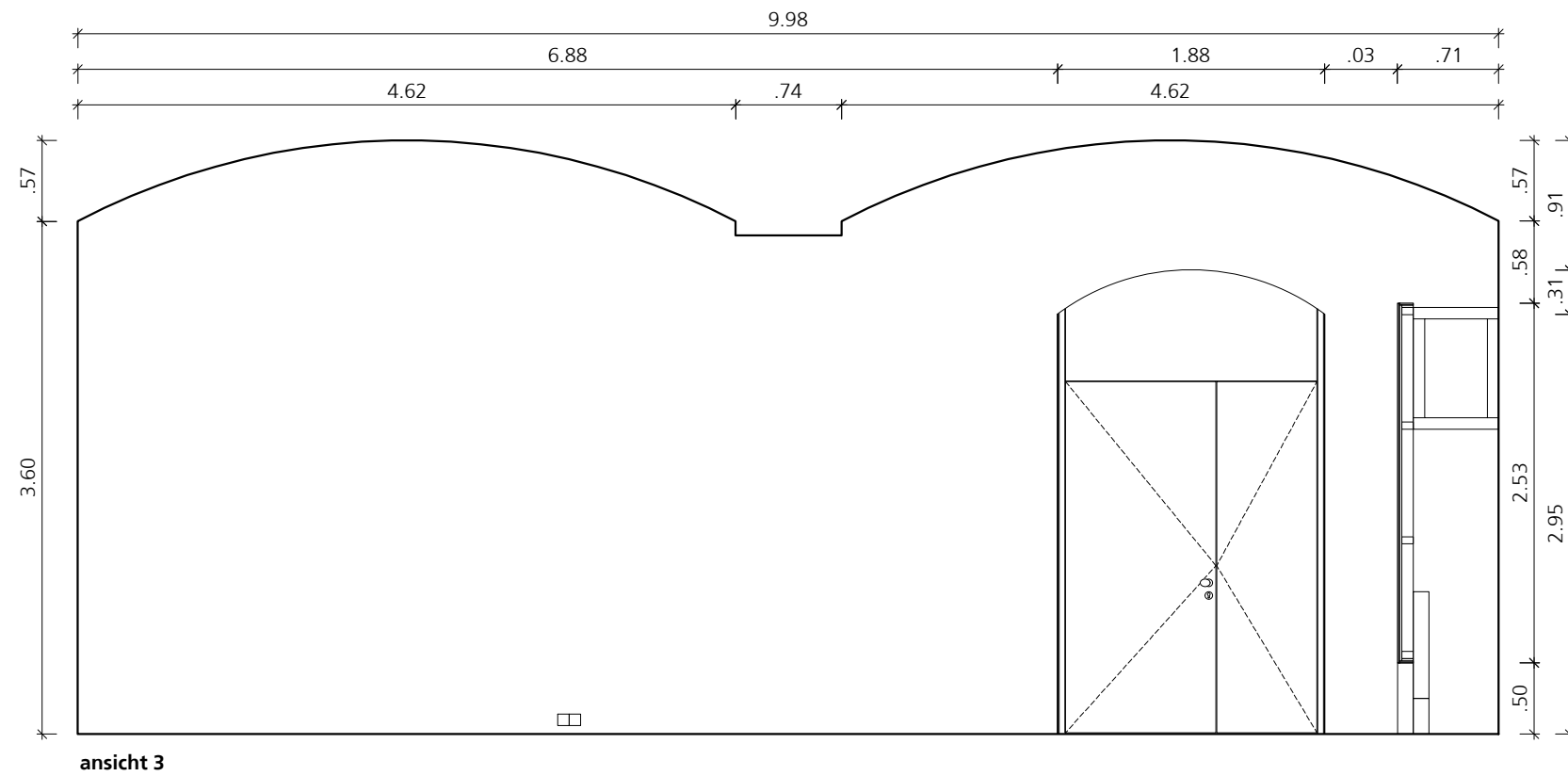
Naturmasze nehmen!
Planmasze prüfen!



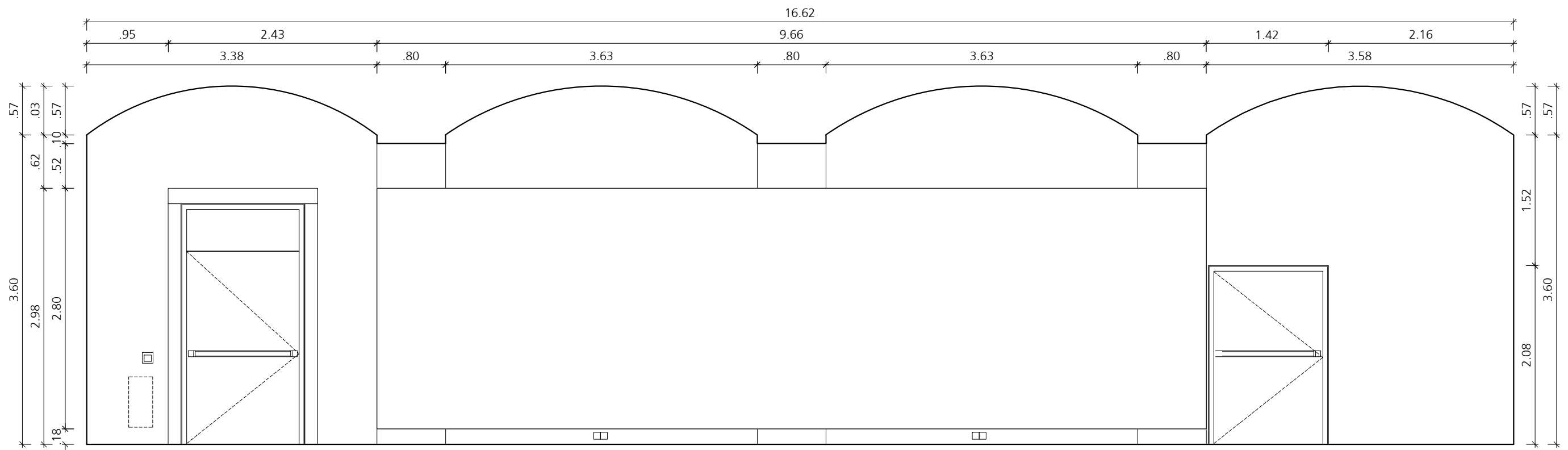
ulrich huhs
architekten

1060 wien, morizgasse 1/20
+43 1 581 83 43
office@ulrichhuhs.eu
www.ulrichhuhs.eu

Projekt 078 xak			Raum 6 - Wandansichten				pol VORABZUG	
Projektnummer 078	Format A3	Massstab 1.50	Freigabevermerk Bauherr	Freigabevermerk Architekt	Datum 29.10.2018	Revision 31.10.2018	Plannummer 078_xak_kur_4_2_b	



ansicht 3



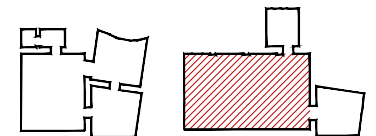
ansicht 4

raum 6

historische ziegeldecke -
keine befestigungen möglich

RWA Raum- und Wärmeabzug

Naturmasze nehmen!
Planmasze prüfen!



ulrich huhs
architekten

1060 wien, morizgasse 1/20
+43 1 581 83 43
office@ulrichhuhs.eu
www.ulrichhuhs.eu

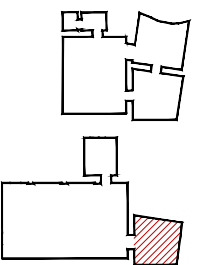
Projekt 078 xak			Raum 6 - Wandansichten				pol	VORABZUG
Projektnummer 078	Format A3	Massstab 1.50	Freigabevermerk Bauherr	Freigabevermerk Architekt	Datum 29.10.2018	Revision 31.10.2018	Plannummer 078_xak_kur_4_3_b	



raum 7
historische ziegeldecke -
keine befestigungen möglich

RWA Rauch- und Wärmeabzug

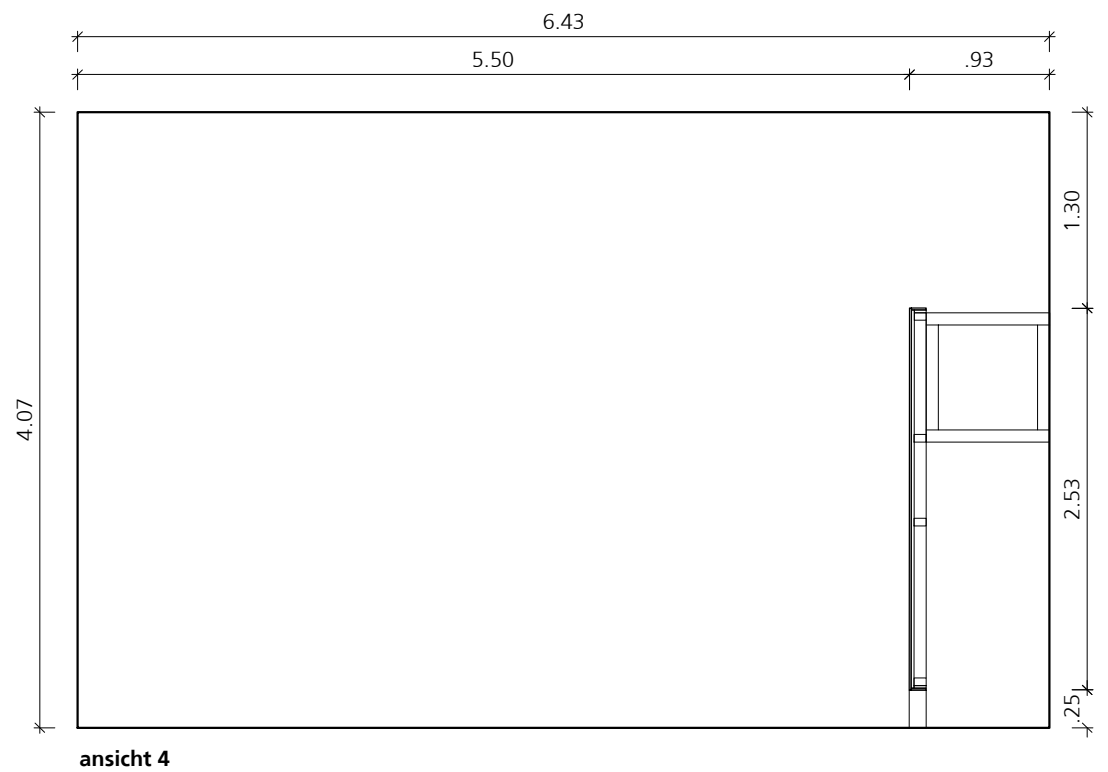
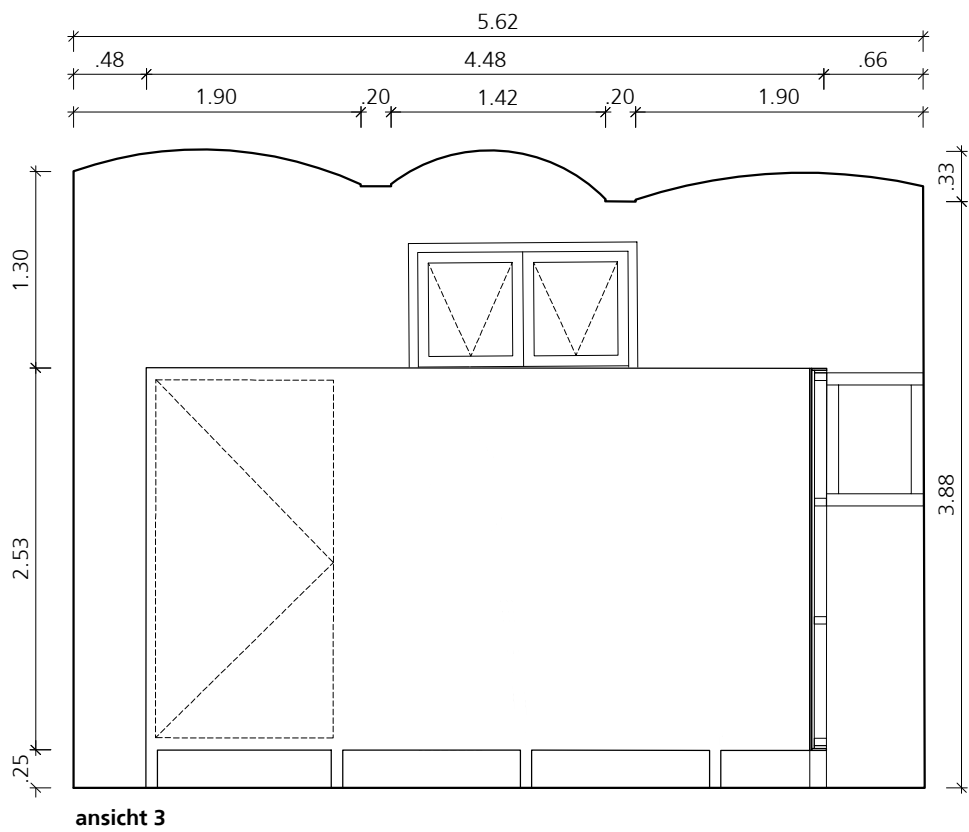
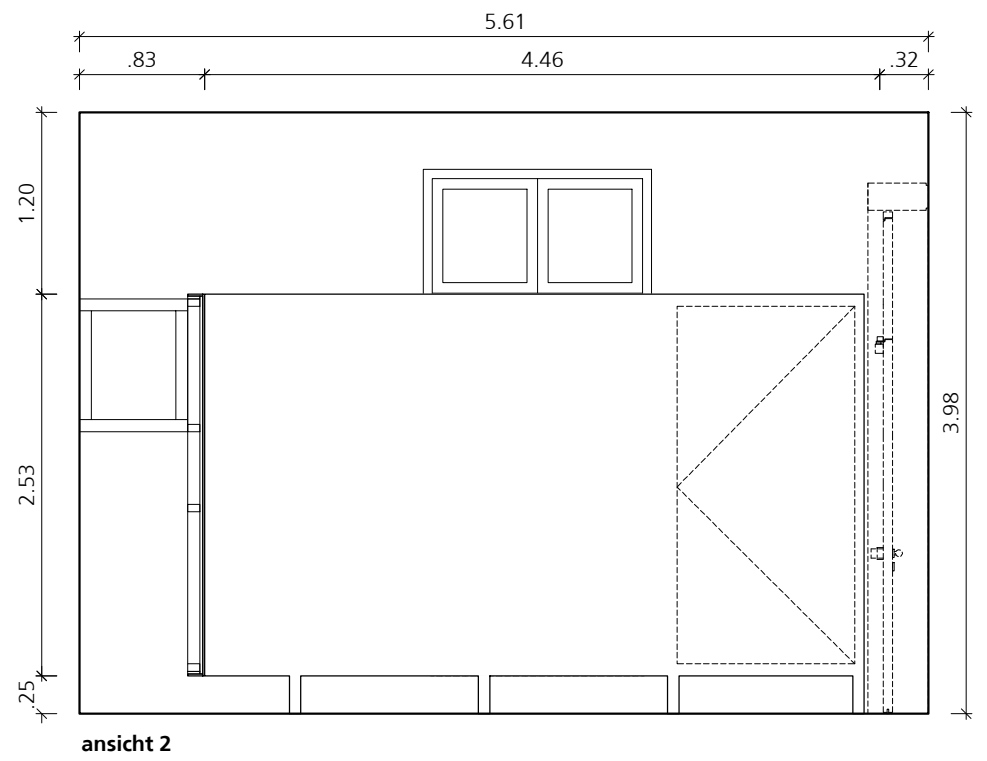
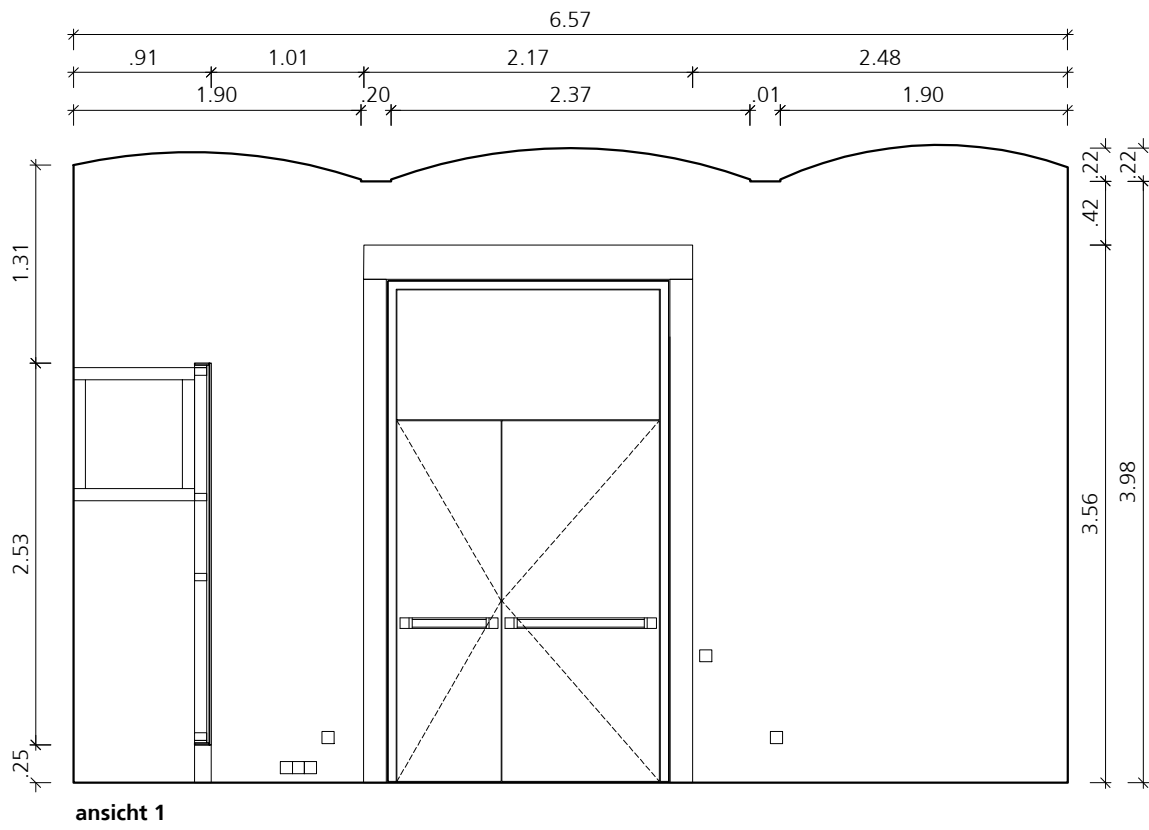
Naturmasze nehmen!
Planmasze prüfen!



ulrich huhs
architekten

1060 wien, morizgasse 1/20
+43 1 581 83 43
office@ulrichhuhs.eu
www.ulrichhuhs.eu

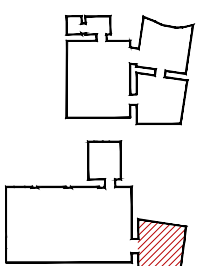
Projekt 078 xak			Raum 7 - Übersicht				pol VORABZUG	
Projektnummer 078	Format A3	Massstab 1:100	Freigabevermerk Bauherr	Freigabevermerk Architekt	Datum 29.10.2018	Revision 30.10.2018	Plannummer 078_xak_kur_5_1_a	



raum 7
historische ziegeldecke -
keine befestigungen möglich

RWA Rauch- und Wärmeabzug

Naturmasze nehmen!
Planmasze prüfen!



ulrich huhs
architekten

1060 wien, morizgasse 1/20
+43 1 581 83 43
office@ulrichhuhs.eu
www.ulrichhuhs.eu

Projekt 078 xak			Raum 7 - Wandansichten				pol VORABZUG	
Projektnummer 078	Format A3	Massstab 1:100	Freigabevermerk Bauherr	Freigabevermerk Architekt	Datum 29.10.2018	Revision 30.10.2018	Plannummer 078_xak_kur_5_2_a	