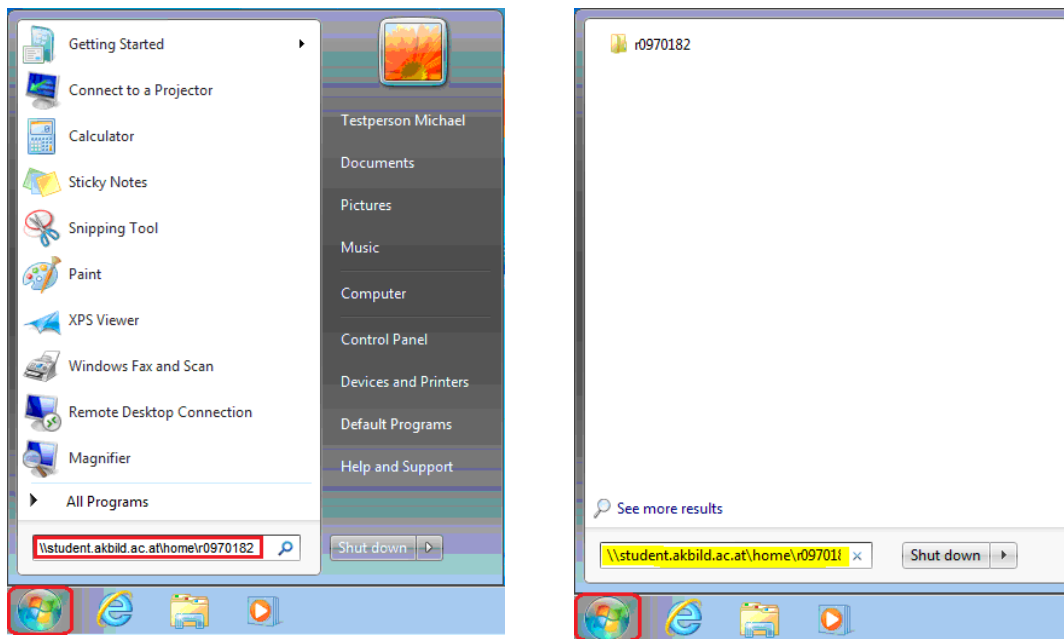


Information Sheet

How to access your Network Home Folder (Windows)

Click on the Start field (bottom left edge of the screen) or press the Windows key to open the following menu:



Please click on the Search field, enter the following address: **\\student.akbild.ac.at/home\r + matriculation number** and press Enter. A window with your student directory will open. On this drive you can store up to 500MB of data.

Please contact the Information Communication Technologies Department (ZID) with any problems or questions at support@akbild.ac.at or 01/58816-1717.